

MAGIC Old School

The Gathering™

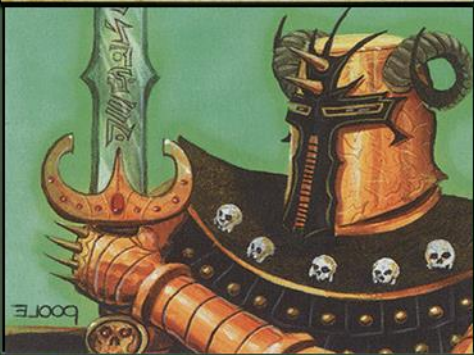


COMPLETE SET OF MTG OLDSCHOOL TOKEN CREATURES

18 cards that can create Token creatures – 8 of these are from Fallen empires expansion alone:



Stangg Twin



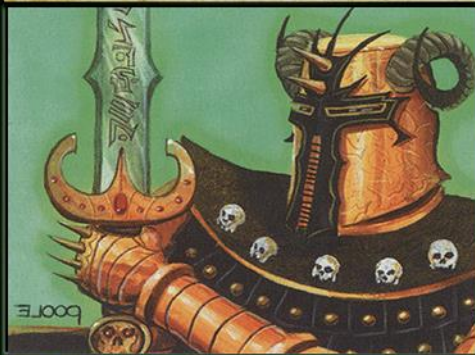
Token Creature – Human warrior

Treat this creature as a red
and green Legendary creature

Illus. Marc Poole

3/4

Stangg Twin



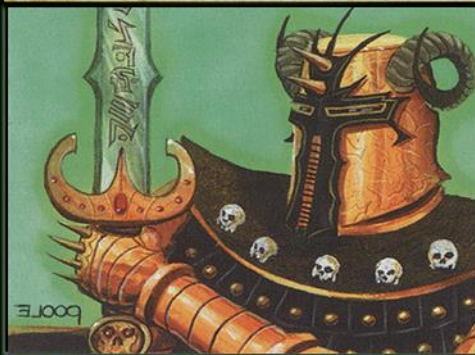
Token Creature – Human warrior

Treat this creature as a red
and green Legendary creature

Illus. Marc Poole

3/4

Stangg Twin



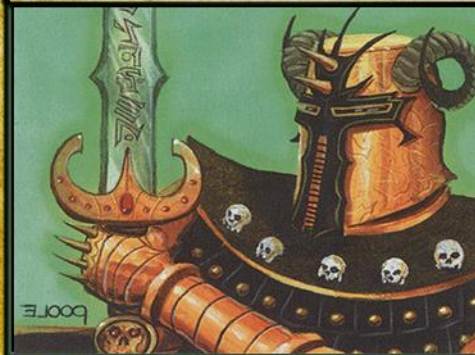
Token Creature – Human warrior

Treat this creature as a red
and green Legendary creature

Illus. Marc Poole

3/4

Stangg Twin



Token Creature – Human warrior

Treat this creature as a red
and green Legendary creature

Illus. Marc Poole

3/4

Minor Demon



Token Creature - Demon

Treat this creature as a
red and black creature

Illus. Anson Maddocks

1/1

Minor Demon



Token Creature - Demon

Treat this creature as a
red and black creature

Illus. Anson Maddocks

1/1

Minor Demon



Token Creature - Demon

Treat this creature as a
red and black creature

Illus. Anson Maddocks

1/1

Minor Demon



Token Creature - Demon

Treat this creature as a
red and black creature

Illus. Anson Maddocks

1/1

Minor Demon



Token Creature - Demon

Treat this creature as a
red and black creature

Illus. Anson Maddocks

1/1

Minor Demon



Token Creature - Demon

Treat this creature as a
red and black creature

Illus. Anson Maddocks

1/1

Minor Demon



Token Creature - Demon

Treat this creature as a
red and black creature

Illus. Anson Maddocks

1/1

Minor Demon



Token Creature - Demon

Treat this creature as a
red and black creature

Illus. Anson Maddocks

1/1

Sand Warrior



Token Creature – Sand Warrior

Treat this creature as a red and green creature.

When Hazezon Tamar, Legendary creature leaves play, exile this creature

Illus. Richard Kane Ferguson

1/1

Sand Warrior



Token Creature – Sand Warrior

Treat this creature as a red and green creature.

When Hazezon Tamar, Legendary creature leaves play, exile this creature

Illus. Richard Kane Ferguson

1/1

Sand Warrior



Token Creature – Sand Warrior

Treat this creature as a red and green creature.

When Hazezon Tamar, Legendary creature leaves play, exile this creature

Illus. Richard Kane Ferguson

1/1

Sand Warrior



Token Creature – Sand Warrior

Treat this creature as a red and green creature.

When Hazezon Tamar, Legendary creature leaves play, exile this creature

Illus. Richard Kane Ferguson

1/1

Sand Warrior



Token Creature – Sand Warrior

Treat this creature as a red and green creature.

When Hazezon Tamar, Legendary creature leaves play, exile this creature

Illus. Richard Kane Ferguson

1/1

Sand Warrior



Token Creature – Sand Warrior

Treat this creature as a red and green creature.

When Hazezon Tamar, Legendary creature leaves play, exile this creature

Illus. Richard Kane Ferguson

1/1

Sand Warrior



Token Creature – Sand Warrior

Treat this creature as a red and green creature.

When Hazezon Tamar, Legendary creature leaves play, exile this creature

Illus. Richard Kane Ferguson

1/1

Sand Warrior



Token Creature – Sand Warrior

Treat this creature as a red and green creature.

When Hazezon Tamar, Legendary creature leaves play, exile this creature

Illus. Richard Kane Ferguson

1/1

Rukh



Token

Flying

Illus. Christopher Rush
©1993-1998 Wizards of the Coast, Inc.

4/4

Rukh



Token

Flying

Illus. Christopher Rush
©1993-1998 Wizards of the Coast, Inc.

4/4

Rukh



Token

Flying

Illus. Christopher Rush
©1993-1998 Wizards of the Coast, Inc.

4/4

Rukh



Token

Flying

Illus. Christopher Rush
©1993-1998 Wizards of the Coast, Inc.

4/4

Copy Token



Token Creature - Copy

Treat this creature as an exact copy
and color of target nontoken creature.

When enchantment card called
Dance of Many leaves the battlefield,
exile this creature

Illus. Sandra Everingham

X/X

Copy Token



Token Creature - Copy

Treat this creature as an exact copy
and color of target nontoken creature.

When enchantment card called
Dance of Many leaves the battlefield,
exile this creature

Illus. Sandra Everingham

X/X

Copy Token



Token Creature - Copy

Treat this creature as an exact copy
and color of target nontoken creature.

When enchantment card called
Dance of Many leaves the battlefield,
exile this creature

Illus. Sandra Everingham

X/X

Copy Token



Token Creature - Copy

Treat this creature as an exact copy
and color of target nontoken creature.

When enchantment card called
Dance of Many leaves the battlefield,
exile this creature

Illus. Sandra Everingham

X/X

Wolf of the Hunt



Token Creature - Wolf

Bands with other Wolves of the Hunt
Treat this creature as a green creature

Illus. Melissa Benson

1/1

Wolf of the Hunt



Token Creature - Wolf

Bands with other Wolves of the Hunt
Treat this creature as a green creature

Illus. Melissa Benson

1/1

Wolf of the Hunt



Token Creature - Wolf

Bands with other Wolves of the Hunt
Treat this creature as a green creature

Illus. Melissa Benson

1/1

Wolf of the Hunt



Token Creature - Wolf

Bands with other Wolves of the Hunt
Treat this creature as a green creature

Illus. Melissa Benson

1/1

Wolf of the Hunt



Token Creature - Wolf

Bands with other Wolves of the Hunt
Treat this creature as a green creature

Illus. Melissa Benson

1/1

Wolf of the Hunt



Token Creature - Wolf

Bands with other Wolves of the Hunt
Treat this creature as a green creature

Illus. Melissa Benson

1/1

Wolf of the Hunt



Token Creature - Wolf

Bands with other Wolves of the Hunt
Treat this creature as a green creature

Illus. Melissa Benson

1/1

Wolf of the Hunt



Token Creature - Wolf

Bands with other Wolves of the Hunt
Treat this creature as a green creature

Illus. Melissa Benson

1/1

Djinn of the Bottle



Token Artifact Creature - Djinn

Flying

Illus. Jesper Myrfors

5/5

Djinn of the Bottle



Token Artifact Creature - Djinn

Flying

Illus. Jesper Myrfors

5/5

Djinn of the Bottle



Token Artifact Creature - Djinn

Flying

Illus. Jesper Myrfors

5/5

Djinn of the Bottle



Token Artifact Creature - Djinn

Flying

Illus. Jesper Myrfors

5/5

Wasp



Token

Flying
Wasp counts as an artifact creature.

Illus. Sandra Everingham
©1993-1998 Wizards of the Coast, Inc.

1/1

Wasp



Token

Flying
Wasp counts as an artifact creature.

Illus. Sandra Everingham
©1993-1998 Wizards of the Coast, Inc.

1/1

Wasp



Token

Flying
Wasp counts as an artifact creature.

Illus. Sandra Everingham
©1993-1998 Wizards of the Coast, Inc.

1/1

Wasp



Token

Flying
Wasp counts as an artifact creature.

Illus. Sandra Everingham
©1993-1998 Wizards of the Coast, Inc.

1/1

Wasp



Token

Flying
Wasp counts as an artifact creature.

Illus. Sandra Everingham
©1993-1998 Wizards of the Coast, Inc.

1/1

Wasp



Token

Flying
Wasp counts as an artifact creature.

Illus. Sandra Everingham
©1993-1998 Wizards of the Coast, Inc.

1/1

Wasp



Token

Flying
Wasp counts as an artifact creature.

Illus. Sandra Everingham
©1993-1998 Wizards of the Coast, Inc.

1/1

Wasp



Token

Flying
Wasp counts as an artifact creature.

Illus. Sandra Everingham
©1993-1998 Wizards of the Coast, Inc.

1/1

Poison Snake



Token Artifact Creature - Snake

Whenever this creature deals damage to a player, that player gets a poison counter.
(A player with ten or more poison counters loses the game.)

Illus. Jeff A. Menges

1/1

Poison Snake



Token Artifact Creature - Snake

Whenever this creature deals damage to a player, that player gets a poison counter.
(A player with ten or more poison counters loses the game.)

Illus. Jeff A. Menges

1/1

Poison Snake



Token Artifact Creature - Snake

Whenever this creature deals damage to a player, that player gets a poison counter.
(A player with ten or more poison counters loses the game.)

Illus. Jeff A. Menges

1/1

Poison Snake



Token Artifact Creature - Snake

Whenever this creature deals damage to a player, that player gets a poison counter.
(A player with ten or more poison counters loses the game.)

Illus. Jeff A. Menges

1/1

Poison Snake



Token Artifact Creature - Snake

Whenever this creature deals damage to a player, that player gets a poison counter.
(A player with ten or more poison counters loses the game.)

Illus. Jeff A. Menges

1/1

Poison Snake



Token Artifact Creature - Snake

Whenever this creature deals damage to a player, that player gets a poison counter.
(A player with ten or more poison counters loses the game.)

Illus. Jeff A. Menges

1/1

Poison Snake



Token Artifact Creature - Snake

Whenever this creature deals damage to a player, that player gets a poison counter.
(A player with ten or more poison counters loses the game.)

Illus. Jeff A. Menges

1/1

Poison Snake



Token Artifact Creature - Snake

Whenever this creature deals damage to a player, that player gets a poison counter.
(A player with ten or more poison counters loses the game.)

Illus. Jeff A. Menges

1/1







Citizen



Token Creature – Citizen

Treat this creature as a white creature.

Illus. Dan Fraizer

1/1

Citizen



Token Creature – Citizen

Treat this creature as a white creature.

Illus. Dan Fraizer

1/1

Citizen



Token Creature – Citizen

Treat this creature as a white creature.

Illus. Dan Fraizer

1/1

Citizen



Token Creature – Citizen

Treat this creature as a white creature.

Illus. Dan Fraizer

1/1

Citizen



Token Creature – Citizen

Treat this creature as a white creature.

Illus. Dan Fraizer

1/1

Citizen



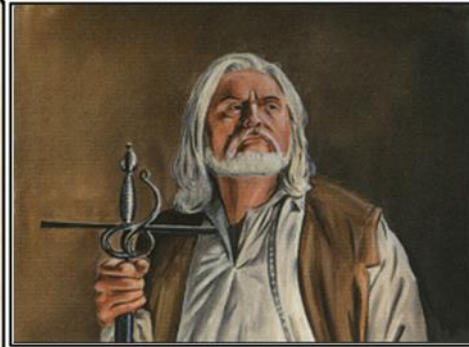
Token Creature – Citizen

Treat this creature as a white creature.

Illus. Dan Fraizer

1/1

Citizen



Token Creature – Citizen

Treat this creature as a white creature.

Illus. Dan Fraizer

1/1

Citizen



Token Creature – Citizen

Treat this creature as a white creature.

Illus. Dan Fraizer

1/1

Camarid



Token Creature - Camarid

Treat this creature as a blue creature.

Illus. Pete Venters

1/1

Camarid



Token Creature - Camarid

Treat this creature as a blue creature.

Illus. Pete Venters

1/1

Camarid



Token Creature - Camarid

Treat this creature as a blue creature.

Illus. Pete Venters

1/1

Camarid



Token Creature - Camarid

Treat this creature as a blue creature.

Illus. Pete Venters

1/1

Camarid



Token Creature - Camarid

Treat this creature as a blue creature.

Illus. Pete Venters

1/1

Camarid



Token Creature - Camarid

Treat this creature as a blue creature.

Illus. Pete Venters

1/1

Camarid



Token Creature - Camarid

Treat this creature as a blue creature.

Illus. Pete Venters

1/1

Camarid



Token Creature - Camarid

Treat this creature as a blue creature.

Illus. Pete Venters

1/1

Goblin



Token Creature - Goblin

Treat this creature as a red creature

"The Goblins bred underground; their numbers hidden from the enemy until it was too late"

Illus. Christopher Rush

1/1

Goblin



Token Creature - Goblin

Treat this creature as a red creature

"The Goblins bred underground; their numbers hidden from the enemy until it was too late"

Illus. Christopher Rush

1/1

Goblin



Token Creature - Goblin

Treat this creature as a red creature

"The Goblins bred underground; their numbers hidden from the enemy until it was too late"

Illus. Christopher Rush

1/1

Goblin



Token Creature - Goblin

Treat this creature as a red creature

"The Goblins bred underground; their numbers hidden from the enemy until it was too late"

Illus. Christopher Rush

1/1

Goblin



Token Creature - Goblin

Treat this creature as a red creature

"The Goblins bred underground; their numbers hidden from the enemy until it was too late"

Illus. Christopher Rush

1/1

Goblin



Token Creature - Goblin

Treat this creature as a red creature

"The Goblins bred underground; their numbers hidden from the enemy until it was too late"

Illus. Christopher Rush

1/1

Goblin



Token Creature - Goblin

Treat this creature as a red creature

"The Goblins bred underground; their numbers hidden from the enemy until it was too late"

Illus. Christopher Rush

1/1

Goblin



Token Creature - Goblin

Treat this creature as a red creature

"The Goblins bred underground; their numbers hidden from the enemy until it was too late"

Illus. Christopher Rush

1/1

Saproling



Token Creature - Saproling

Treat this creature as a green creature

Illus. Ron Spencer

1/1

Saproling



Token Creature - Saproling

Treat this creature as a green creature

Illus. Ron Spencer

1/1

Saproling



Token Creature - Saproling

Treat this creature as a green creature

Illus. Ron Spencer

1/1

Saproling



Token Creature - Saproling

Treat this creature as a green creature

Illus. Ron Spencer

1/1

Saproling



Token Creature - Saproling

Treat this creature as a green creature

Illus. Ron spencer

1/1

Saproling



Token Creature - Saproling

Treat this creature as a green creature

Illus. Ron spencer

1/1

Saproling



Token Creature - Saproling

Treat this creature as a green creature

Illus. Ron spencer

1/1

Saproling



Token Creature - Saproling

Treat this creature as a green creature

Illus. Ron spencer

1/1

Saproling



Token Creature - Saproling

Treat this creature as a green creature

Illus. Ron spencer

1/1

Saproling



Token Creature - Saproling

Treat this creature as a green creature

Illus. Ron spencer

1/1

Saproling



Token Creature - Saproling

Treat this creature as a green creature

Illus. Ron spencer

1/1

Saproling



Token Creature - Saproling

Treat this creature as a green creature

Illus. Ron spencer

1/1

Thrull



Token Creature - Thrull

Treat this creature as a black creature

"The Thrulls bred at a terrifying pace. In the end they overwhelmed the Order of the Ebon Hand"

Illus. Marc Tedin

0/1

Thrull



Token Creature - Thrull

Treat this creature as a black creature

"The Thrulls bred at a terrifying pace. In the end they overwhelmed the Order of the Ebon Hand"

Illus. Marc Tedin

0/1

Thrull



Token Creature - Thrull

Treat this creature as a black creature

"The Thrulls bred at a terrifying pace. In the end they overwhelmed the Order of the Ebon Hand"

Illus. Marc Tedin

0/1

Thrull



Token Creature - Thrull

Treat this creature as a black creature

"The Thrulls bred at a terrifying pace. In the end they overwhelmed the Order of the Ebon Hand"

Illus. Marc Tedin

0/1

Thrull



Token Creature - Thrull

Treat this creature as a black creature

"The Thrulls bred at a terrifying pace. In the end they overwhelmed the Order of the Ebon Hand"

Illus. Marc Tedin

0/1

Thrull



Token Creature - Thrull

Treat this creature as a black creature

"The Thrulls bred at a terrifying pace. In the end they overwhelmed the Order of the Ebon Hand"

Illus. Marc Tedin

0/1

Thrull



Token Creature - Thrull

Treat this creature as a black creature

"The Thrulls bred at a terrifying pace. In the end they overwhelmed the Order of the Ebon Hand"

Illus. Marc Tedin

0/1

Thrull



Token Creature - Thrull

Treat this creature as a black creature

"The Thrulls bred at a terrifying pace. In the end they overwhelmed the Order of the Ebon Hand"

Illus. Marc Tedin

0/1

Thrull



Token Creature - Thrull

Treat this creature as a black creature

"The Thrulls bred at a terrifying pace. In the end they overwhelmed the Order of the Ebon Hand"

Illus. Marc Tedin

0/1

Thrull



Token Creature - Thrull

Treat this creature as a black creature

"The Thrulls bred at a terrifying pace. In the end they overwhelmed the Order of the Ebon Hand"

Illus. Marc Tedin

0/1

Thrull



Token Creature - Thrull

Treat this creature as a black creature

"The Thrulls bred at a terrifying pace. In the end they overwhelmed the Order of the Ebon Hand"

Illus. Marc Tedin

0/1

Thrull



Token Creature - Thrull

Treat this creature as a black creature

"The Thrulls bred at a terrifying pace. In the end they overwhelmed the Order of the Ebon Hand"

Illus. Marc Tedin

0/1